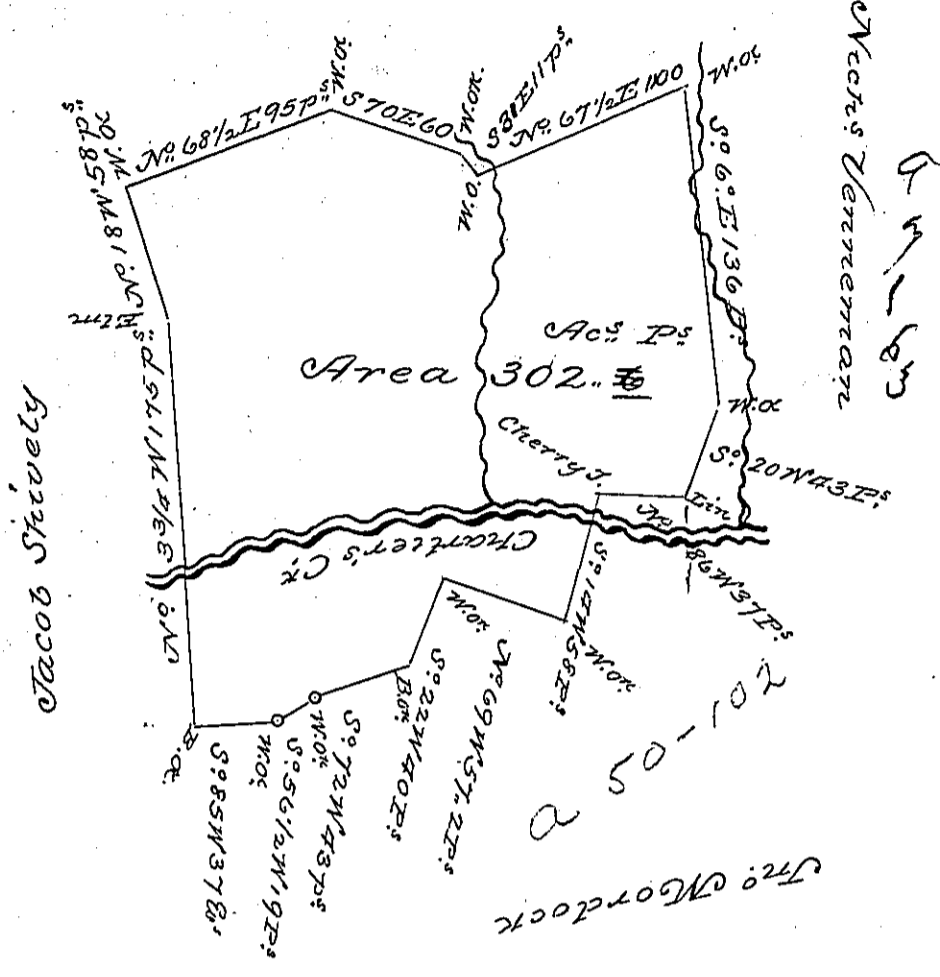


133 - 93

Jas & Saml. Leijer

192-63



A Draught of a Survey lying on Charlers Creek in Washington County, containing 302 Ac: and 6 P:, without any Allowes, executed 24th Jan'y. 1786, in pursuance of a Certificate in the name of Geo. Venneman for 400 ac: obtained from the Commiss^{rs} of Virg^a and regularly entered with the County Surveyor, as appears from the authenticated copy of Entries in my Possession

Ent^d 24th April 1780

Presley Nevill Dept Surr

John Lukens Esq: }
Surr^y Gen^l. }

IN TESTIMONY that the above is a copy of the original remaining on file in the Department of Internal Affairs of Pennsylvania, made conformably to an Act of Assembly approved the 16th day of February, 1833, I have hereunto set my Hand and caused the Seal of said Department to be affixed at Harrisburg, this

Second day of November 1897

James W. Hatter
Secretary of Internal Affairs.